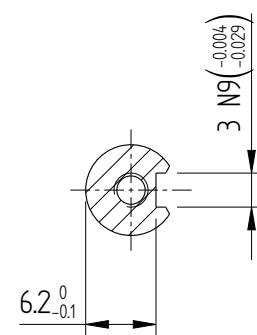
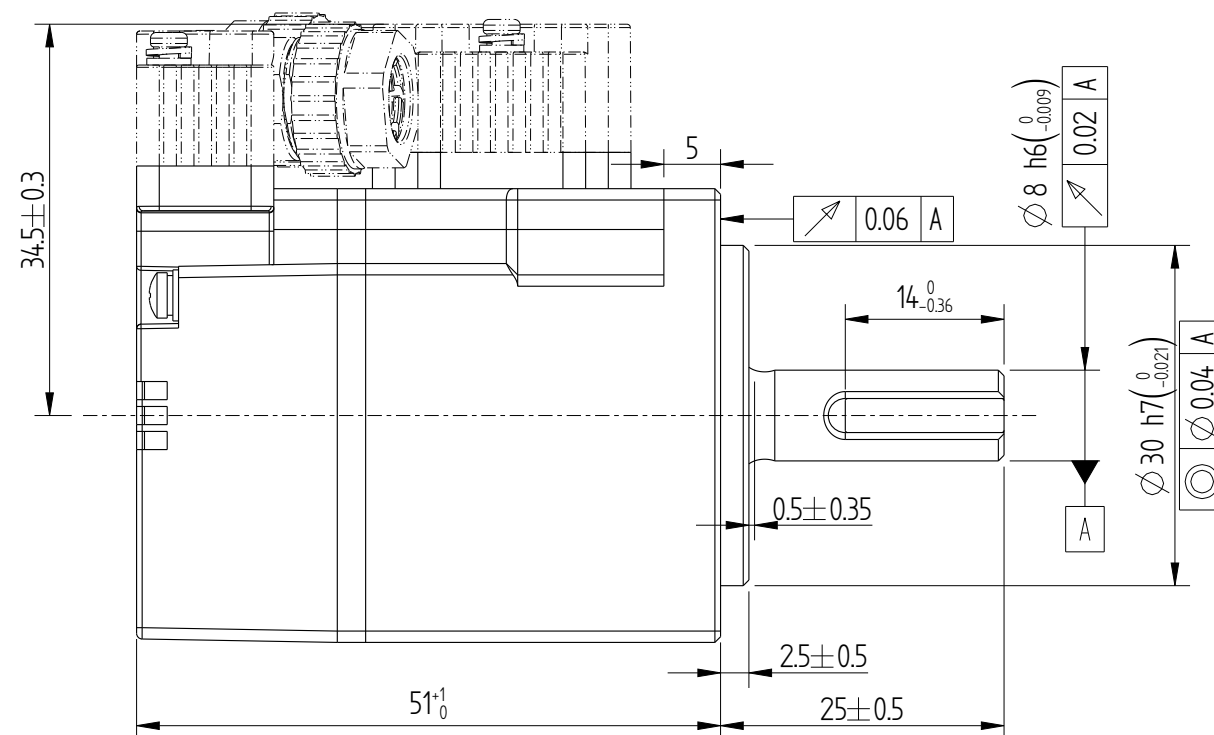
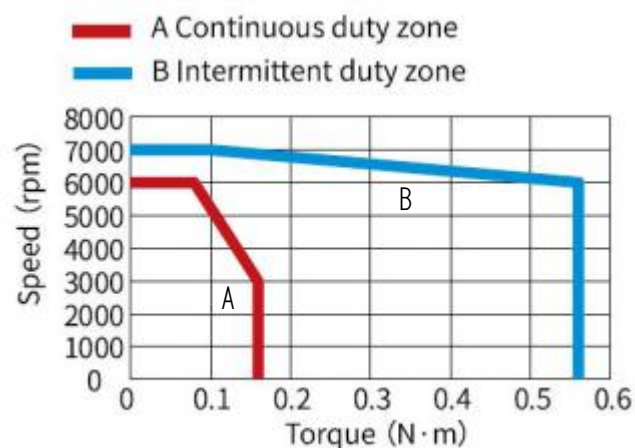
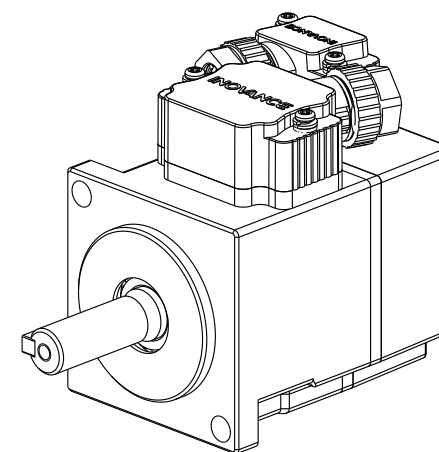


| Basic function parameters | |
|---|------------------|
| Rated power kW | 0.05 |
| Rated voltage V | 220 |
| Rated current A | 1.27 |
| Peak current at rated speed A | 4.78 |
| Rated torque Nm | 0.16 |
| Peak torque at rated speed Nm | 0.56 |
| Rated speed rpm | 3000 |
| Max speed rpm | 7000 |
| Rotor inertia $\text{kg} \cdot \text{cm}^2$ | $0.038 \pm 10\%$ |
| Encoder resolution | 23bit |
| Insulation class | F(155) |
| Protection class | IP67 |
| Static torque of brake Nm | / |
| Brake power supply V | / |
| Brake backlash° | / |
| Duty cycle | S1 |
| Radial load N | ≤ 78 |
| Axial load N | ≤ 54 |



Dimension of shaft end with key



| | |
|------|---|
| Mark |  INOVANCE |
| | |